



उत्तर प्रदेश ग्रामीण बैंक Uttar Pradesh Gramin Bank

(सरकार के सम्मित्वधीन अनुसूचित बैंक)
(Schedule Bank Owned by Government)

क्षेत्रीय कार्यालय : बी-59, आवास विकास कालोनी, उन्नाव-209801
दूरभाष : 7388800196 / 197 / 198
ई-मेल : rounnao.personnel@gba-rrb.com/rounnao.fim@gba-rrb.com

Regional Office : B-59, Avas Vikas Colony, Unnao-209801
Phone : 7388800196/197/198
Email : rounnao.adv@gba-rrb.com/rounnao.cmnard@gba-rrb.com

ROU/P.E./Y.P.S./2025-26/375

Date : 08.09.2025

Quotation for electrical, data cabling, ups wiring earthing work of Padri kalan Branch (Unnao Region)

(Only empanelled vendors can quote)

Uttar Pradesh Gramin Bank, Regional Office, Unnao invite the competitive rates from bonafide empanelled vendors for the proposed electrical work, data cabling, UPS wiring, earthing work and solar wiring (wherever required) work of **Padri Kalan Branch** situated in Unnao Region under the detail and terms and conditions as follows-

| S.NO. | BRANCH | BRANCH STATUS | REGION | PREMISES | ARCHITECT | Br. PHONE NUMBER |
|-------|-------------|---------------|--------|----------|---------------------------|------------------|
| 1 | Padri Kalan | Ready | Unnao | New | M/S Gunjan and Associates | 7388800141 |

TERMS AND CONDITIONS-

Please submit your competitive rates in closed envelope for each sets of District under following terms and condition: -

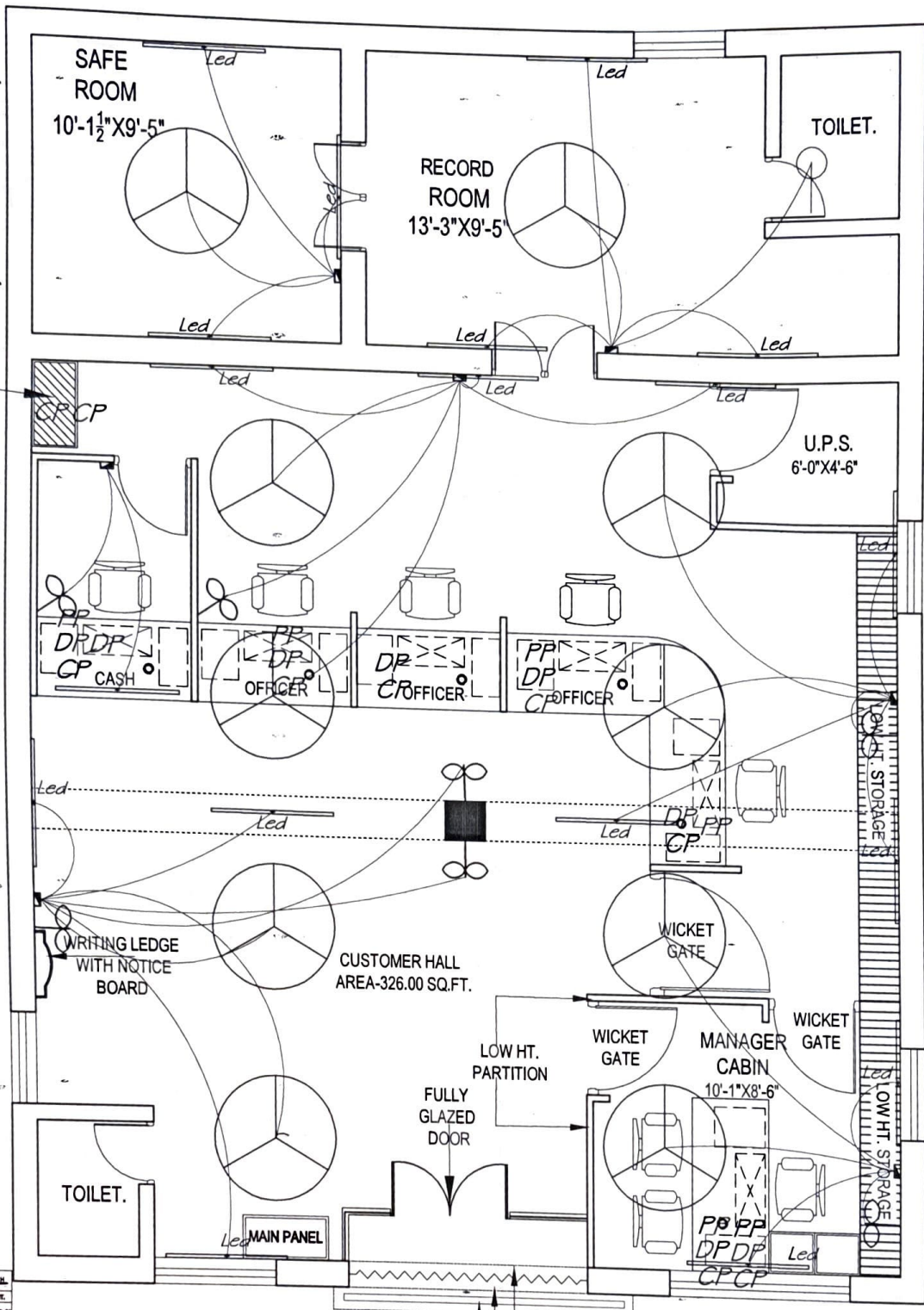
| | |
|----|--|
| 1 | The rates quoted should be inclusive of all type of charges, expanses, FOR at the branch. The GST if applicable will be paid extra. |
| 2 | Please quote your competitive rate on the enclosed formats, Incomplete and conditional quotation will be treated as cancelled.. |
| 3 | If it is found that the material used is not same as mentioned in quotation then the bank has the right to reject the work and for this Bank will not make any payment as well as the said firm may be removed from the Bank's empanelled list. |
| 4 | The electrical work will be done as per approved layout, If any type of modification is required in furnishing work it must be duly approved by the Regional Manager of Unnao Region. |
| 5 | If rates quoted by you are accepted to Bank then the electrical work is to be completed in given time, please note that if the work is not completed in given time (i.e. maximum 30 days from the date of issue of work order), then the bank has the right to impose the penalty at the rate of 2.00% for each 7 days delay (maximum 10%). |
| 6 | Rates quoted will be valid for 180 days from the date of opening of quotation. |
| 7 | The work shall be executed under the supervision of our consulting Architect and as per specification demonstrated in offer BID Proforma / BOQ. |
| 8 | After the allotted work is completed it will be duly verified by the Regional Manager, Unnao / Senior Manager (P & E department), Regional Office / any officer authorized by the Regional Manager as well as the Architect authorized for supervision / verification of work at the Unnao Region and Branch Manager of concerned Branch. |
| 9 | Please note that the bank will not provide any advance/ interim payment against the work order however payment in full or in parts will be made only after the work completed and verified by the Architect and The Regional manager, Unnao. |
| 10 | Bank will retain 5 % cost of bill for 365 days while making the payment to cover the defect liability period from the date of payment of final bill. |
| 11 | Please note that it is the responsibility of the vendor to inform the Regional Office for inspection of material to be used (after transportation of the material) before starting the furnishing work at the branch, the material which is to be used should be duly certified by the Regional Manager, Unnao/ Architect or any officer deputed from the Regional Office. |
| 12 | The quotation in a closed and sealed envelope marked as Bid super scribing " Quotation for electrical, data cabling, ups wiring earthing work of Gulariha Branch, Unnao Region " must reach at Regional office, Unnao at following address " The Regional Manager, Uttar Pradesh Gramin Bank, Regional Office, Unnao, B-59, Awas Vikas Colony, Unnao – 209801 " positively on or before 26.09.2025 upto 04:00 PM. |
| 13 | Please Note carefully that Bank shall be under no obligation to accept the lowest or any other offer received in response to this tender. Order will be placed keeping in view all the norms, features, quality, performance, services, brand name and certification etc. The bank has the full right to accept or reject the one and all tenders without any notice, any decision taken by Bank at any point of time in connection with the process shall be final and conclusive and no claim or dispute from any quarter in that regard shall be entertained. |
| 14 | Please submit your competitive rates in closed envelope positively on or before 26.09.2025 and the quotation will be opened on 29.09.2025 at Regional office, Unnao Region on 12:00 AM in presence of committee members (subject to availability of committee members). All empanelled vendors (who quoted the rates) are requested to remain present at the time of opening of tenders. Please note that no separate invitation will be sent. |

Encl:

- BOQ
- Layout Plan
- LOM

**Regional Manager
Unnao Region**

ROUTER AT THE TOP



LEGENDA FOR FALM CEILING BRANCH

| CODE | SYMBOL | DESCRIPTION | HT. |
|------|--------|--------------------------|-------|
| 1. | 1" | 1" long LED Tube Light | 7'-0" |
| 2. | 2" | 2" long LED Tube Light | 7'-0" |
| 3. | 3" | 3" long LED Tube Light | 7'-0" |
| 4. | 4" | 4" long LED Tube Light | 7'-0" |
| 5. | 5" | 5" long LED Tube Light | 7'-0" |
| 6. | 6" | 6" long LED Tube Light | 7'-0" |
| 7. | 7" | 7" long LED Tube Light | 7'-0" |
| 8. | 8" | 8" long LED Tube Light | 7'-0" |
| 9. | 9" | 9" long LED Tube Light | 7'-0" |
| 10. | 10" | 10" long LED Tube Light | 7'-0" |
| 11. | 11" | 11" long LED Tube Light | 7'-0" |
| 12. | 12" | 12" long LED Tube Light | 7'-0" |
| 13. | 13" | 13" long LED Tube Light | 7'-0" |
| 14. | 14" | 14" long LED Tube Light | 7'-0" |
| 15. | 15" | 15" long LED Tube Light | 7'-0" |
| 16. | 16" | 16" long LED Tube Light | 7'-0" |
| 17. | 17" | 17" long LED Tube Light | 7'-0" |
| 18. | 18" | 18" long LED Tube Light | 7'-0" |
| 19. | 19" | 19" long LED Tube Light | 7'-0" |
| 20. | 20" | 20" long LED Tube Light | 7'-0" |
| 21. | 21" | 21" long LED Tube Light | 7'-0" |
| 22. | 22" | 22" long LED Tube Light | 7'-0" |
| 23. | 23" | 23" long LED Tube Light | 7'-0" |
| 24. | 24" | 24" long LED Tube Light | 7'-0" |
| 25. | 25" | 25" long LED Tube Light | 7'-0" |
| 26. | 26" | 26" long LED Tube Light | 7'-0" |
| 27. | 27" | 27" long LED Tube Light | 7'-0" |
| 28. | 28" | 28" long LED Tube Light | 7'-0" |
| 29. | 29" | 29" long LED Tube Light | 7'-0" |
| 30. | 30" | 30" long LED Tube Light | 7'-0" |
| 31. | 31" | 31" long LED Tube Light | 7'-0" |
| 32. | 32" | 32" long LED Tube Light | 7'-0" |
| 33. | 33" | 33" long LED Tube Light | 7'-0" |
| 34. | 34" | 34" long LED Tube Light | 7'-0" |
| 35. | 35" | 35" long LED Tube Light | 7'-0" |
| 36. | 36" | 36" long LED Tube Light | 7'-0" |
| 37. | 37" | 37" long LED Tube Light | 7'-0" |
| 38. | 38" | 38" long LED Tube Light | 7'-0" |
| 39. | 39" | 39" long LED Tube Light | 7'-0" |
| 40. | 40" | 40" long LED Tube Light | 7'-0" |
| 41. | 41" | 41" long LED Tube Light | 7'-0" |
| 42. | 42" | 42" long LED Tube Light | 7'-0" |
| 43. | 43" | 43" long LED Tube Light | 7'-0" |
| 44. | 44" | 44" long LED Tube Light | 7'-0" |
| 45. | 45" | 45" long LED Tube Light | 7'-0" |
| 46. | 46" | 46" long LED Tube Light | 7'-0" |
| 47. | 47" | 47" long LED Tube Light | 7'-0" |
| 48. | 48" | 48" long LED Tube Light | 7'-0" |
| 49. | 49" | 49" long LED Tube Light | 7'-0" |
| 50. | 50" | 50" long LED Tube Light | 7'-0" |
| 51. | 51" | 51" long LED Tube Light | 7'-0" |
| 52. | 52" | 52" long LED Tube Light | 7'-0" |
| 53. | 53" | 53" long LED Tube Light | 7'-0" |
| 54. | 54" | 54" long LED Tube Light | 7'-0" |
| 55. | 55" | 55" long LED Tube Light | 7'-0" |
| 56. | 56" | 56" long LED Tube Light | 7'-0" |
| 57. | 57" | 57" long LED Tube Light | 7'-0" |
| 58. | 58" | 58" long LED Tube Light | 7'-0" |
| 59. | 59" | 59" long LED Tube Light | 7'-0" |
| 60. | 60" | 60" long LED Tube Light | 7'-0" |
| 61. | 61" | 61" long LED Tube Light | 7'-0" |
| 62. | 62" | 62" long LED Tube Light | 7'-0" |
| 63. | 63" | 63" long LED Tube Light | 7'-0" |
| 64. | 64" | 64" long LED Tube Light | 7'-0" |
| 65. | 65" | 65" long LED Tube Light | 7'-0" |
| 66. | 66" | 66" long LED Tube Light | 7'-0" |
| 67. | 67" | 67" long LED Tube Light | 7'-0" |
| 68. | 68" | 68" long LED Tube Light | 7'-0" |
| 69. | 69" | 69" long LED Tube Light | 7'-0" |
| 70. | 70" | 70" long LED Tube Light | 7'-0" |
| 71. | 71" | 71" long LED Tube Light | 7'-0" |
| 72. | 72" | 72" long LED Tube Light | 7'-0" |
| 73. | 73" | 73" long LED Tube Light | 7'-0" |
| 74. | 74" | 74" long LED Tube Light | 7'-0" |
| 75. | 75" | 75" long LED Tube Light | 7'-0" |
| 76. | 76" | 76" long LED Tube Light | 7'-0" |
| 77. | 77" | 77" long LED Tube Light | 7'-0" |
| 78. | 78" | 78" long LED Tube Light | 7'-0" |
| 79. | 79" | 79" long LED Tube Light | 7'-0" |
| 80. | 80" | 80" long LED Tube Light | 7'-0" |
| 81. | 81" | 81" long LED Tube Light | 7'-0" |
| 82. | 82" | 82" long LED Tube Light | 7'-0" |
| 83. | 83" | 83" long LED Tube Light | 7'-0" |
| 84. | 84" | 84" long LED Tube Light | 7'-0" |
| 85. | 85" | 85" long LED Tube Light | 7'-0" |
| 86. | 86" | 86" long LED Tube Light | 7'-0" |
| 87. | 87" | 87" long LED Tube Light | 7'-0" |
| 88. | 88" | 88" long LED Tube Light | 7'-0" |
| 89. | 89" | 89" long LED Tube Light | 7'-0" |
| 90. | 90" | 90" long LED Tube Light | 7'-0" |
| 91. | 91" | 91" long LED Tube Light | 7'-0" |
| 92. | 92" | 92" long LED Tube Light | 7'-0" |
| 93. | 93" | 93" long LED Tube Light | 7'-0" |
| 94. | 94" | 94" long LED Tube Light | 7'-0" |
| 95. | 95" | 95" long LED Tube Light | 7'-0" |
| 96. | 96" | 96" long LED Tube Light | 7'-0" |
| 97. | 97" | 97" long LED Tube Light | 7'-0" |
| 98. | 98" | 98" long LED Tube Light | 7'-0" |
| 99. | 99" | 99" long LED Tube Light | 7'-0" |
| 100. | 100" | 100" long LED Tube Light | 7'-0" |

ROLLING SHUTTER
ROLLING SHUTTER BOX
M.S. COLLAPSIBLE SHUTTER

ALTERNATIVE-1

PROJECT:-

ELECTRICAL PLAN
FOR U.P. GRAMIN BANK
BRANCH AT PADARI KALAN
REGION, UNNAO.

DRG. TITLE:-

GROUND FLOOR

DATE:-

JUNE-2025

NORTH:-

N

DRAWN BY:-

ARCHITECT:-
GUNJAN & ASSOCIATES
ARCHITECTS, ENGINEERS, INTERIOR
AND LANDSCAPE DESIGNERS.
141, SAINIK NAGAR, LANE NO-9,
RAEBARELI ROAD LUCKNOW-226002
Telephone No:- +0522-3553324
Phone No:- +9838818489, 9839018489
E-Mail:-studio@gunjanandassociates.com
Web:-www.gunjanandassociates.com

Gunjan and Associates
Architects, Engineers, Interiors
& Landscape Designers

141, Sainik Nagar, Raibareilly Road, Lucknow-226002

Phone: 0522-3553324, 9838818489

E-mail: studio@gunjanandassociates.com

URL: www.gunjanandassociates.com

BILL OF QUANTITY FOR ELECTRICAL WORKS

FOR UTTAR PRADESH GRAMIN BANK, BRANCH AT PADARI KALAN, RO UNNAO.

| S.NO. | DESCRIPTION OF ITEM | QTY | UNIT | RATE (Rs.) | AMOUNT (Rs.) |
|-------|--|-----|------|------------|--------------|
| 1 | SITC of 100Amp Kit kat Fuse unit 3 nos with 100 Amp neutral link on wooden board (3' x 3') complete with connections (new). | 1 | Set | | |
| | ELECTRICAL PANEL | | | | |
| 2 | ELECTRICAL DISTRIBUTION Db SITC of 6way Vertical TPN DB complete with 100Amp 16kA TPN MCCB as Incomer, 63A TP 10kA MCB -4 Nos and 6-16Amp S.Pole 10kA MCB-3 Nos as outing complete in all respects as required The job shall be completed, to the satisfaction of the Bank Engineer/Architect. | 1 | Set | | |
| 3 | <u>Changeover</u> : S/F of 63A 4P changeover near Main Db for regulating DG supply including proper connections. | 1 | Each | | |
| LOM | Changeover Switch- C&S/ Havells/ L&T/ HPL | | | | |
| 3 | UPS I/P, O/P AND DISTRIBUTION | | | | |
| a. | SITC of 40/32 AMP industrial socket along with DPMCB for UPS & Inverter I/P ,O/P | 2 | Nos. | | |
| b | SITC of 12 WAY SPN DB Double Door (1 No. 40 AMP DP MCB and 10 NOS. 6-10 AMP SPMCB) (Branch UPS Power Distribution for UPS Points at Manager Cabin (2nos.), and Staff counters (5nos.). F&B Alarm System (2nos.) and 9U Rack (1nos.). | 1 | Nos. | | |
| c | SITC of 63Amp Rotary Phase selector switch complete with RYB indication lift in incloser complete in all respects as required. (Branch UPS) | 1 | Nos. | | |
| 4 | RAW POWER & FAN, LIGHTING DB & AC DISTRIBUTION BOARD | | | | |
| a. | 4 WAY TPN DB Double Door (1 No. 20 AMP TP MCB and 12 Nos. 6-10 AMP. SPMCB in each outgoing circuit for Light, Fan & 6A Socket 15A Power Points,) all complete. | 1 | Nos. | | |
| 5 | CABLES | | | | |
| a. | SITC of 3.5 Core 16.0 Sq.mm Aluminium Armoured Cable (From Electric Meter to Electric Panel), complete with end termination and all respect as required. | 22 | Mtr. | | |
| b. | SITC of 4 x 6.0 Sq.mm Copper Wire + 1 x 4.0 Sqmm Copper Earth Wire (Panel to UPS Incomer, LDP and UPSDB) in PVC Pipe fixing on walls or chassing the walls and making it good with cement mortar of 1:5 ratio and painting compete with end termination/lugs and in all respect as required. | 75 | Mtr. | | |
| c. | SITC of 2 x 6.0 Sq.mm Copper Wire + 1 x 2.5 Sqmm Copper Earth Wire (Rotary Switch to UPS and UPS to UPS DB) in PVC Pipe fixing on walls or chassing the walls and making it good with cement mortar of 1:5 ratio and painting compete with end termination/lugs and in all respect as required. | 87 | Mtr. | | |
| | EARTHING | | | | |
| a. | Technology GEL type 50mmdia 3000mm long earth electrod. One Earthing for structural grounding, | 2 | Nos. | | |



| | | | | | |
|----|---|----|------|--|--|
| b. | 4 Sq.mm Copper Earth Wire from earthing pit /Earth terminal to load point (UPS DB and Main DB etc) | 62 | Mtr. | | |
| 8 | UPS POINT | | | | |
| a | Supply & Installation of point wiring for Primary UPS or stabilized power plug points on workstations / table for computers using 3 x 1.5 Sq.mm copper conductor multi strand FR PVC sheathed flexible wire pulled through floor raceways/conduit and taken upto table top using PVC rigid or flexible conduits run within wooden/metal partitions. Each point consisting of 2 nos of 10A 3 pin sockets, 1 nos 16A 2/3 pin sockets, 1 nos 16A Switch (Modular) & 1 nos indicator, wired together forming one point. The earth wire of green color only. No secondary UPS Points to be made. | 9 | Nos. | | |
| 9 | RAW POWER POINT 16A SOCKET POINT IN WALL ONLY | | | | |
| a. | Supply & Installation of point wiring for Primary Raw power plug points on walls only for computers using 2X4+1X2.5 Sq.mm copper conductor PVC sheathed flexible wire pulled through already laid floor raceways and taken upto table top using PVC rigid or flexible conduits run within wooden/metal partitions. Each point consisting of 2 nos of 16A 2/3/5 pin socket & 2 nos 16A Switch (Modular), wired together forming one point. The earth wire of green color only. No secondary Points to be made. <u>(Only 2cash,D.W., 2B.M. 3 Officer,)</u> | 7 | Nos. | | |
| b | Strong room controlling DP MCB - Circuit wiring with 3*1.5sq.mm FRLSH Cu stranded wires to be laid in 20 mm OD PVC medium duty laid & concealed in wall/ floor/ panelling/ partitions or above false ceiling as per requirement. The job also includes supply & fixing of 32A 2P MCB in 2way metallic box including connections with lugs. The job shall be complete & to the entire satisfaction of the Bank. | | Job | | |
| | PVC Insulated FRLSH Copper wire (ISI Marked)- Skyline/ Finolex/ Havells/ Polycab | | | | |
| | PVC Conduit- CAP/ BEC/ Sieko/ AKG | | | | |
| | MCB 10kA "C" Characteristics L&T/ Siemens/ Schnider/ Legrand | | | | |
| 10 | LIGHT/FAN POINT | | | | |
| | Supply & Installation of concealed point wiring using 600v grade 1.5 Sq.mm copper conductor PVC insulated wires (with proper R,Y,B color code) pulled through heavy gauge PVC conduits laid concealed over false ceiling including 2 Nos. 2.5 sqmm circuit wires from the relevant DB and also including 2.5 sqmm green color copper earth wire and switch plate, switches, etc. as approved by the Bank's Engineer/Architect. | | | | |
| a. | Primary light points including the cost of 10 A modular switch | 20 | Nos. | | |
| c. | Ceiling Fan Point including the cost of 10A modular Switch along with 4/5 step electronic fan regulator. | 10 | Nos. | | |
| d. | Wall Fan Point along with 10 AMP modular switch | 7 | Nos. | | |
| e. | Exhaust Fan Point along with 10 AMP modular switch | 2 | Nos. | | |
| f. | 6/10A Switch with 5pin 10A socket in counter, light & fan board | 5 | Nos. | | |
| 11 | DATA CABLING & POINT THERE MUST BE MINIMUM 3FEET DISTANCE BETWEEN DATA AND | | | | |
| | Supplying and laying of D-Link make CAT-6 (UTP) cable through trenches / conduits. | | | | |
| a. | Supplying and laying D-link make CAT-6 Cable complete with CAT-6 information outlet with plate & surface Box at individual Tables | 8 | Nos. | | |
| b. | Supplying and fixing of 2 mtr long crimped patch cord | 8 | Nos. | | |
| c. | SITC of 9U Rack including wire manager, power supply card, hardwares etc. complete in all respects | 1 | No. | | |
| | Racks- Com Rack/ HCL/ Val Rack/ APW President | | | | |
| | S/F of 24 Port Patch Panel complete in all respects | 1 | Each | | |
| | Patch Panel- Brocade/ Cisco/ DigiLink/ 3 Com/ Nortel/ Foundary/ D- Link | | | | |



| | | | | | |
|----|---|----|------|--|--|
| | | | | | |
| 13 | FIXTURES | | | | |
| | SITC of following fixtures as per make list | | | | |
| a | LED Tube Light Patti Type (white) - 20 Watts Make/ Brand as per MAKE LIST | 18 | Nos. | | |
| b | Ceiling Fan - 1200mm Make/ Brand as per MAKE LIST | 10 | Nos. | | |
| c | Wall Mounted 80/100 watt plastic body Fan - 400mm, 1300 to 1500RPM Make/ Brand as per MAKE LIST | 7 | Nos. | | |
| d | Exhaust Fan Metal Body - 300mm Make/ Brand as per MAKE LIST | 2 | Nos. | | |
| e | LED Bulb with holder (white) - 9 Watts | 2 | Nos. | | |
| | | | | | |
| | TOTAL (excl. GST) (Rs.) | | | | |

Note: All rates are excluding G.S.T.

For GUNJAN & ASSOCIATES

Gunjan Kapur
(Ms. GUNJAN KAPUR)
PROPRIETOR

Ar. Gunjan Kapur

For M/s Gunjan & Associates

