

उत्तर प्रदेश ग्रामीण बैंक

Uttar Pradesh Gramin Bank

Regional Office – Banda

Date : 22.07.2025

RO/BANDA/PE/2025-26/131

Dear All Empanelled Furnishing Contractors

Dear Sir,

INTERIOR FURNISHING WORK OF DC ATARRA BRANCH IN BANDA REGION

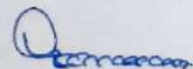
(Only empanelled furnishers of Uttar Pradesh Gramin Bank can quote)

Uttar Pradesh Gramin Bank, Banda Region invites your competitive rates for the Furnishing work at the premises of following branch situated in Banda Region under the following terms and conditions:

TERMS AND CONDITION

Please submit your rates in a sealed covered under following terms and conditions:-

S. No.	Branch	Branch Status	Region	Premises	Architect	Br CUG No.
1	DC ATARRA	Rural	Banda	New	Corner's'n'Edges Pro. Vivek Singh	8188089153 9889894045
1	The rate quoted should be inclusive of all types of changes, expanses, for the branch, the GST if applicable will be paid extra.					
2	Please quote your competitive rate on the enclosed formats.					
3	If it is found that the materials used is not the same as mentioned in the quotation then the bank has the right to reject the work and the material.					
4	If any type of change is required in furnishing work it should be duly approved by the Regional Manager of Banda Region.					
5	If the rate quoted by you is accepted by the bank then the furnishing work is to be completed in a given time, please ensure that if the work is not completed in given time then the bank has the right to impose the penalty at the rate of 5% for 7 days delay.					
6	The rate quoted will be valid for 180 days from the date of opening the quotation.					
7	Please ensure the measurement, quantity, items which are tentative and may increase or decrease as per the requirement of the bank. The variation may be up to 20%.					
8	After the work is completed it will be duly verified by the Regional Manager, Banda Region as well as the Architect authorized for supervision/verification of work for the bank.					
9	Please ensure that the bank will not provide any advance against the work order however payment in full or in parts will be made only after the work is completed and verified by the Architect and Regional manager.					
10	Bank will retain the 5% cost of the bill for 180 days while making the payment to cover the defect liability period from the date of payment of final bill.					
11	Please ensure that before starting the work at the branch, the raw material may be duly verified by the Regional Manager, Banda Region. The furnisher has to provide the full cooperation to the firms who have to complete the electrical work.					
12	The quotation in the closed envelope must reach at Regional office, Banda Region positively on or before 11.08.2025 up to 05:00 PM.					
13	Please ensure that quoting the lowest rate is not necessary, the bank may allow the work and in this regards the bank has the full right to accept or reject the one and all tenders without any notice.					
14	The architect for furnishing work at DC Atarra Branch is Corner's'n'Edges Pro. Vivek Singh, Lucknow.					
15	Please submit your competitive rates in sealed covered envelope positively on or before 11.08.2025 up to 05:00 pm at office address :- UTTAR PRADESH GRAMIN BANK, REGIONAL OFFICE, D.M COLONY, CIVIL LINE, BANDA-210001. The quotation will be opened on 12.08.2025 at regional office, Banda on 11:00 am in presence of committee members. All empanelled furnishers (who quoted the rates) are requested to remain present at the time of opening of tenders. Please note that no separate invitation will be sent.					

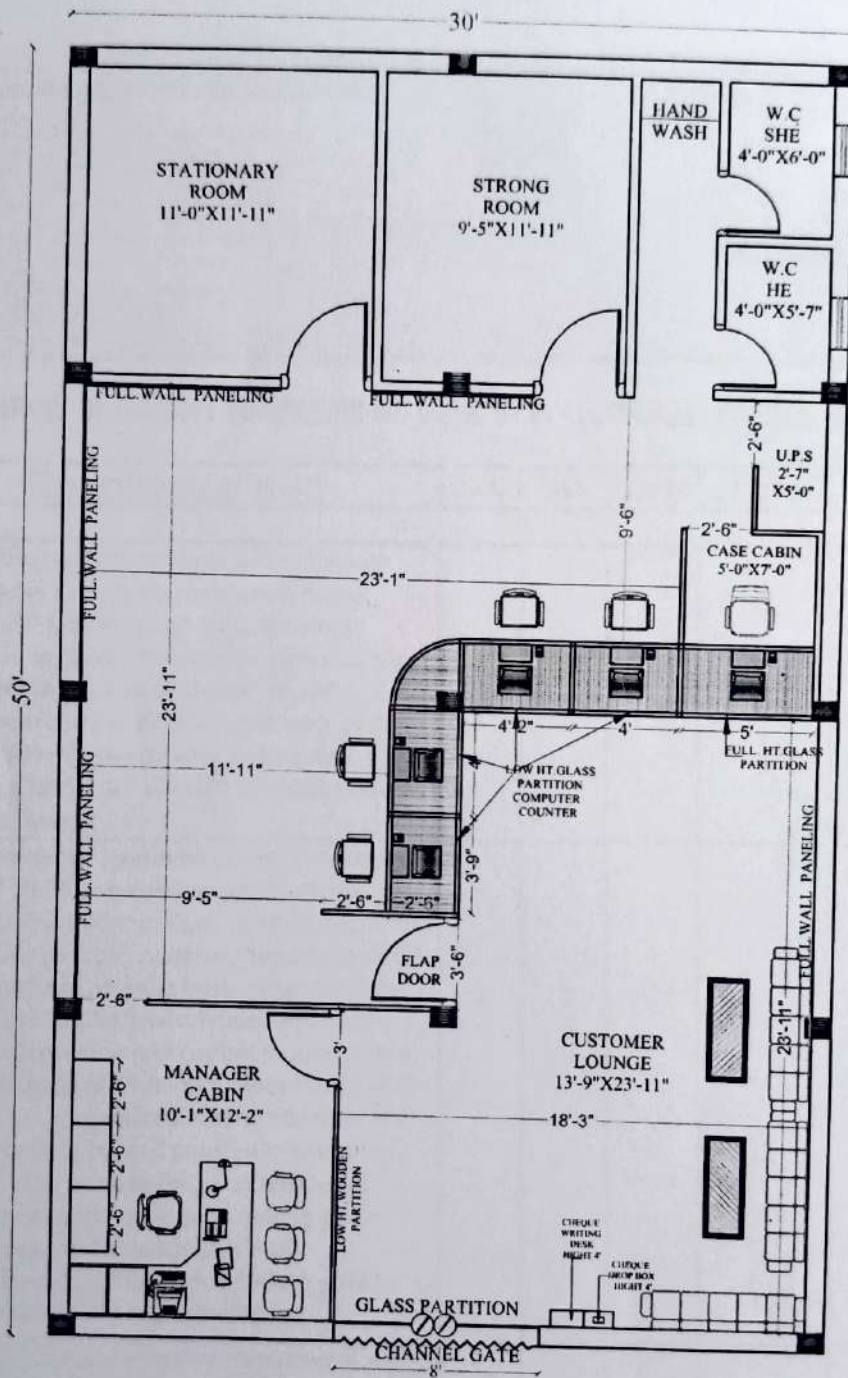


(VINOD KESWANI)

(REGIONAL MANAGER)

प्रधान कार्यालय: द्वितीय एवं तृतीय तल, एनबीसीसी कमर्शियल कॉम्प्लेक्स, वरदान खंड, गोमती नगर एक्सटेंशन, लखनऊ - 226010
Head Office: 2nd and 3rd floor, NBCC Commercial Complex, Vardan Khand, Gomti Nagar Extension, Lucknow - 226010
email- ho@barodauprrb.co.in

PRODUCED BY AN AUTODESK EDUCATIONAL PRODUCT



**U.P G.B BANK- DEGREE COLLEGE
ATARRA
BRANCH (RO.BANDA)**

TOTAL CARPET AREA = 1446.406 SQFT

CUSTOMER LOUNGE = 328.854 SQFT

WORKING AREA = 1117.552 SQFT

PRODUCED BY AN AUTODESK EDUCATIONAL PRODUCT

PRODUCED BY AN AUTODESK EDUCATIONAL PRODUCT

PRODUCED BY AN AUTODESK EDUCATIONAL PRODUCT

Architects Engineers & Valuers

- Government of India Registered Valuer
 • Income Tax Reg. No. 262/2003 CAT-1 Immovable Property
 • Institute of International Appraisers & Valuers
 • Corporate Member of Institution of Engineers (India)
 • Chartered Engineer Registration No. AM 082832/C/5
 • Approved Architect (A.I.I.A. App.)
 • Expert in Water Proofing for Multistoried Residential and Commercial Building
 • Soil Testing, Cube Testing and Antitermite Treatment
 • Member of Indian Road Congress
- Fellowship Approved :
 • Institute of International Appraisers and Valuers
 • Institute of Valuers (India) Reg. No. IV-9321
 • Indian Association of Structural Engineers
 • Member of Consulting Engineer Association of India

**CORNER'S 'n' EDGES****Prop. Vivek Singh**


B.E. (CIVIL), M.I.E., (Arch.)
 FIV., A.M.I.E., A.M.I.V., M.I.R.C.
CHARTERED ENGINEER

Quotation of Interior Furnishing of U P G B D. C. ATARRA Branch RO BANDA

S.no	Description of Item	NO.	Qty	Unit	Rate	Amount
1	Cash Cabin partition made of both side 6.00 mm commercial ply on pine wood frame section, 50 X 35 mm and 1.00 mm mica, aluminum grill partition on the side and mica laminated aluminum grill door, top of case cabin covered by aluminum grill with 19.00 mm borad with sunmica pasted border, size of cash cabin 5ft X 7 ft X 8.0 ft (width, length & height respectively)	1	240	Sq.ft		
2	Bank counter of approved design for cashier made of 19.00 mm commercial block board and sunmica 1.00 mm thick of approved brand and colour on front customer top and writing desk. Height of counter from customer side 114 cm (45"). Width of writing desk 75 cm. (30") with provision of cupboard after every 1.20 mts made of 19.00 mm block board with 1.0 mm sunmica pasted innerr side drawers and cupboards be well painted in matching colour (with asian paint) and teakwood beading complete with good quality polish having clear and smooth finish . all multipurpose godrej locks & brown powder coated metallic 75 mm handles.	1	6	RFT		
3	Computer counter made of 19.00 mm block board with table top at the height 75 cm and 80 cm wide sunmica 1.0 mm on top and cupboard and sliding key board with provision of fixing of glass in front. Including all locks & handles as stated above.	1	18	RFT		

4	12 MM plain glass with rounded edges with etching as per the requirement of bank for computer counter (Height: 60 cms) (With teak wood frame 70 cm).	1	36	Sq.ft		
5	Low Height Partition made of both sides 6.00 mm commercial ply laminated with 1.0 mm sunmica on Cheed Wood frame section 50.00 mmx30.00 mm with glass of 12 mm and door made of 100 x 25 Pine wood frame and ply and mica including all locks, handles & bolt, quality polish etc.	1	315	Sq.ft		
6	Counter side partition made of 19.00 mm BB& 1.00 mm mica on both sides of approved colour including all locks handles & bolt etc.	1	24	Sq.ft		
7	Column/ wall Paneling with 19.00 mm board and 1.00 mm mica	1	455	Sq.ft		
	<u>Total</u>					

S.no	Description of Item	Qty	Unit	Rate	Amount
1	Table for Manager size 150x75x75 cm (5.00 X 2.50 x2 .50) with sunmica top having CPU Stand on one side and one drawer and one cupboard on the other side made of 19.00 mm board with 1.0 mm sunmica pasted on all sides, lock on all drawers and all cupboards. Footrest with table, teak wood beading well polished with clear polish , including ali locks	1	No		
2	Officer Table made of 19.00 mm board with sunmica 1.0 mm both sides and front size 135x75x75 (4.5x2.5x2.5) with Cpu stand on one side and one cupboard and one drawers on the other with lock on all drawers and all cupboards. Teak wood beading well polished with clear polish	1	No		
3	Computer Operator Chair with arms, revolving and P.U. base with twin wheel, casters, with moulded foam seat and back upholstered in good quality cloth.	0	No	0.00	0.00
4	Manager chair, high back revolving and tilting with moulded foam seat and back with P.U. arms and P.U. base, with twin wheel casters upholstered in good quality cloth. Sample chair can be seen at head office.	0	No	0.00	0.00
5	office chair,Medium back revolving with moulded foam seat with P.U. arms and P.U. base, with twin wheel casters upholstered in good quality cloth. Sample chair can be seen at head office.	0	No	0.00	0.00
6	Visitor Chair-without Arms on M.S. pipe base with moulded foam.	0	No	0.00	0.00
7	Supply and fixing of cash cabin lock Godrej make 7 levers Self-locking latch.	1	No		
8	Bench , box type made of 19mm board with mica pasted on top and sides, size of bench 18 inch X 60 inch X 18 inch having two segments in box.	5	No		
9	Notice board made of 19.00 mm board laminated with 1.00 mm mica of approved colour , base with 12.00 mm soft board on 6.00 mm board base, covered by good quality cherry colour cloth with sliding 5 mm glass doors, size of notice board 6" X 36" X 36" .	1	No		
10	Cheque writing desk made of 19.00mm block board with sunmica on side and 12.00 mm glass top with 3 segments in the box, size 48" X 12" X 12" , to be property fixed on wall.	1	No		

11	Suggestion Box made of 19.00 mm board with Size = 15" X 12" Laminated with mica on top, glass in front including godrej lock & handle.	1	No		
12	Cheque Drop Box Size =15" X 12" Laminated with mica on top including godrej lock & brass handle. Glass in front	1	No		
13	Cupboard for manager and officer size 4'x1'-6"x2'-6" (120x45x75) with sunmica having 3 drawers & cupboard made of 19.00 mm board with 1.00 mm sunmica pasted on all outer sides & locks on all Drawers & all cupboards.	2	No		
14	Aluminum entrance door with partition made of aluminum section of hindalco / jindal, 63 mm X 38mm and 1.5 mm thick with 5.00mm thick glass with doors made of door section side 47mm X 44 mm and door bottom 114mm X 44 mm, top and middle section of 83 mm X 44 mm , with 5 mm glass complete with lock , door closers. Tower bolts and handles etc.	132	Sq.ft		
15	Door closure / Floor spring				
		1	NOS		
16	Storage for Manager Height 2'-6"	82	NOS		
17	False Ceiling As required By Bank Armstrong / Insula Make having Size 24" with powder coated aluminium strip Complete supply & Fixing as required By Bank	1250	SQFT		
<u>Total</u>					

Total Amount Rs.	—————→	
------------------	--------	--

**VIVEK
SINGH**

Digitally signed by
VIVEK SINGH
Date: 2025.07.05
18:04:40 +05'30'

Note:- All Quantities / Measurements/ Estimated Amount are subject to final measurement on site in the presence of Architect/Engineer/ Bank official and are subjected to variation up to 15% to 20%.

TERMS AND CONDITIONS	
A	Before installation of material at site it should be inspected and approved by an Architect/ authorized by the Bank to ensure use of proper material. Use of non-approved brand of mica, board is strictly prohibited and fixing of material before proper inspection should be avoided. Material installed without proper inspection may be totally rejected.
B	Rate quoted must be F.O.R. i.e. at branches; bank will not pay any transportation, packing, loading, and unloading charges.
C	Metal Runners to be used for drawers.
D	Beadings are required on top of every drawer & cupboards.
E	CPU Stands are included on every cash cabin, counter, Table, cable, manager of good quality with chain & foot rests are required with all tables & counters.
F	The work if awarded is required to be completed in given time, delay will attract penalty @5.00%for 15 days block or part there of.
G	The clear polishing work is required to be of good quality, before polishing proper denting & smoothening should be done.
H	The drawing of interior work of the branch is enclosed herewith.
I	The furnishing work will be checked and verified by the architect / chief manager (A& S) / Regional manager or their representative.
J	In case of any clarification / difficulty , you may contact bank's architect or officer A &S Department.
List Approved Material	
S.no	Material
1	Commercial Board / ply used brand
2	Laminate
3	Screw (oxidized)
4	Hardware
5	Adhesive
6	Door closure / Floor spring
7	Locks
8	Glass
9	paints
10	Aluminum door and window section
11	Vertical blinds
12	Soft board
Approved Brand / Make	
Corbett, Donear, Green ply Archid , century ply, Aica Brands only.	
Optus, Archid , Century, Aica of 1.00 mm	
Gkw/ Nettle fold	
ISI marked	
Fevicol SH	
Hyper / Everite / Amar	
Godrej	
Modi, Float glass, saint Gobain	
Nerolac, Berger, Asian , Dulux	
Jindal , Hindalco and MK	
Vista	
Cellotex	

**VIVEK
SINGH**

Digitally signed by
VIVEK SINGH
Date: 2025.07.05
18:04:55 +05'30'